

**AA** HARRIS AERIAL

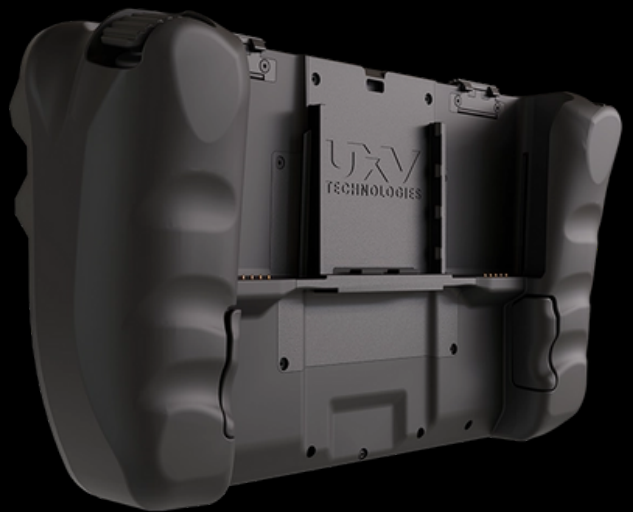
# C-SRoC

7" HD Display • Secure Connectivity  
Rugged & Tactical Design • Swappable Radio Modules



SRoC is our military-grade handheld GCS, designed for the modular SRM radio platform with the Nett Warrior connector integrated into the controller handle. It provides exceptional communication capability even in harsh environments. In addition to the internal battery, the SRoC conveniently accommodates two Swappable Battery Modules (SBMs) on its back, allowing for easy power expansion.

Engineered for robustness, reliability, and advanced functionalities, the SRoC serves as a ruggedized ground control station. It offers a standardized, highly adaptable solution by interfacing with our cutting-edge Swappable Radio Modules (SRM) and the Nett Warrior connector.



[HARRISAERIAL.COM](http://HARRISAERIAL.COM)

[INFO@HARRISAERIAL.COM](mailto:INFO@HARRISAERIAL.COM) | (407) 725-7886



# C-SROC

## MECHANICAL

Finish	Soft touch coated ABS	Dimension	10.08 x 5.11 x 2.68 inches 256 x 140 x 68 mm
Weight	2.04 lbs / 927 g	Mounting	Chest Mount Available

## COMPUTATION

Encryption	AES 256	Memory	4GB (LPDDR4)
CPU	Qualcomm® SDM660 2.2GHz 1.843 GHz Octa-core	Display	7" WXGA 1280x800 · 10-point capacities

## SOFTWARE

GCS Software	HA Ground Control	Operating System	Android or Windows
--------------	-------------------	------------------	--------------------

## ELECTRICAL

Charging	USB C (Tablet only), Nett Warrior (Tablet + Attached accessories)
----------	---

## HUMAN INTERFACES

Finish	Soft touch coated ABS	Dimension	10.08 x 5.11 x 2.68 inches 256 x 140 x 68 mm
Weight	2.04 lbs / 927 g	Mounting	Chest Mount Available

## CONNECTIONS

USB-C	USB 3.0 Type-C® host (OTG, BC 1.2, DP, HDMI)	SBM slot	Hot Swappable Dynamically Balancing Ruggedized Battery Port
Nett Warrior Port	EUD Compatibility with Nett Warrior Interface	SRM Sledge	Swappable Radio Module with Common Mechanical & Electrical Interface

## ENVIRONMENTAL

Built to Standards	MIL-STD-810-H	Compliance	CE, ROHS compliant
Ingress rating	IP65	Operating Temp	-20°C to +50°C (*Charging above 10° only)

**HARRISAERIAL.COM**

INFO@HARRISAERIAL.COM | (407) 725-7886