

AA HARRIS AERIAL

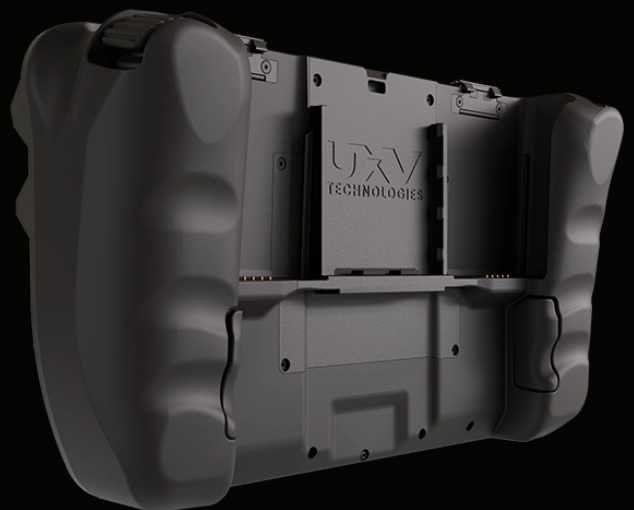
C-SRoC

7" WXGA HID Display • Secure Connectivity
Rugged & Tactical Design • GCS Software Compatibility



SRoC is designed for the innovative SRM radio platform with the Nett Warrior connector integrated into the controller handle, it provides exceptional communication flexibility even in harsh environments. In addition to the internal battery, the SRoC conveniently accommodates two Swappable Battery Modules (SBMs) on its back, allowing for easy power expansion.

Engineered for robustness, reliability, and advanced functionalities, the SRoC serves as a ruggedized ground control station. It offers a standardized, highly adaptable solution by interfacing with our cutting-edge Swappable Radio Modules (SRM) and the Nett Warrior connector.



HARRISAERIAL.COM

INFO@HARRISAERIAL.COM | (407) 725-7886



C-SRoC

MECHANICAL

Finish	Soft touch coated ABS	Dimension	10.08 x 5.11 x 2.68 inches 256 x 140 x 68 mm
Weight	2.04 lbs / 927 g	Mounting	Chest Mount Available

COMPUTATION

OS	Android 11	Memory	4GB (LPDDR4)
CPU	Qualcomm® SDM660 2.2GHz 1.843 GHz Octa-core	Display	7" WXGA 1280x800 · 10-point capacities

ELECTRICAL

Charging	USB C (Tablet only), Nett Warrior (Tablet + Attached accessories)
-----------------	---

HUMAN INTERFACES

Finish	Soft touch coated ABS	Dimension	10.08 x 5.11 x 2.68 inches 256 x 140 x 68 mm
Weight	2.04 lbs / 927 g	Mounting	Chest Mount Available

CONNECTIONS

USB-C	USB 3.0 Type-C® host (OTG, BC 1.2, DP, HDMI)	SBM slot	Hot Swappable Dynamically Balancing Ruggedized Battery Port
Nett Warrior Port	EUD Compatibility with Nett Warrior Interface	SRM Sledge	Swappable Radio Module with Common Mechanical & Electrical Interface

ENVIRONMENTAL

Built to Standards	MIL-STD-810-H	Compliance	CE, ROHS compliant
Ingress rating	IP65	Operating Temp	-20°C to +50°C (*Charging above 10° only)

HARRISAERIAL.COM

INFO@HARRISAERIAL.COM | (407) 725-7886